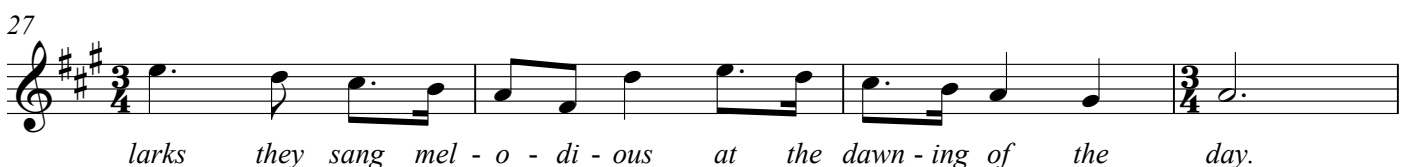
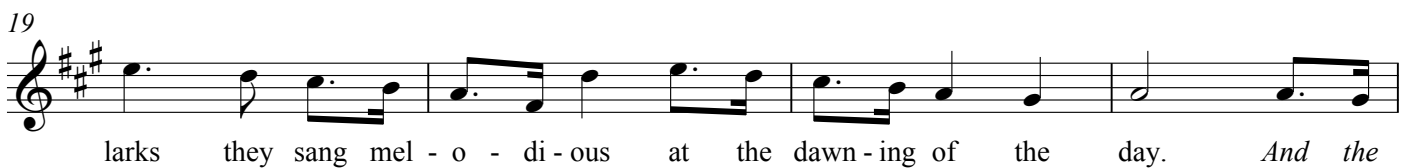
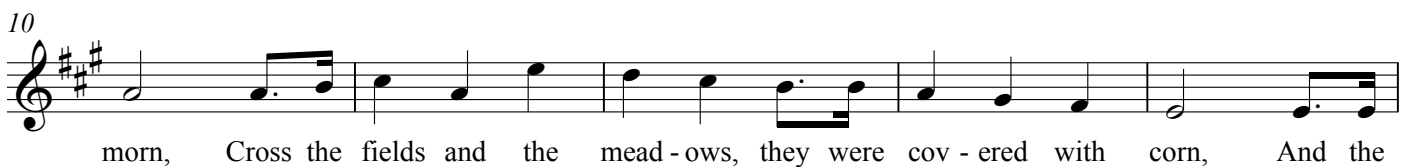
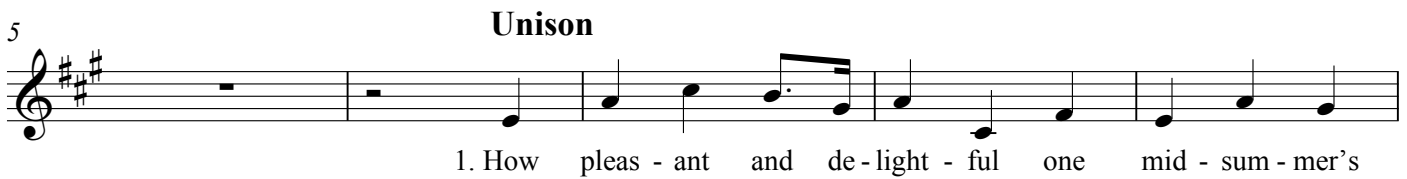


# Pleasant and Delightful

Words and melody traditional  
(Collected in Suffolk from the traditional  
singer Jumbo Brightwell, by Neil Lanham)  
Arrangement by Paul Sartin

Joyfully ♩ = 100



35 **In 3 parts**

2. A sail - or and his true love was a - walk - ing that day, Says the

2. A sail - or and his true love was a - walk - ing that day, Says the

2. A sail - or and his true love was a - walk - ing that day, Says the

40

sail - or to his true love, I am bound far a - way. Bound out to the

sail - or to his true love, I am bound far a - way. Bound out to the

sail - or to his true love, I am bound far a - way. Bound out to the

45

In - dies where the wild bil - lows\_ roar, I must go and leave my

In - dies where the wild bil - lows roar, I must go and leave my

In - dies where the wild bil - lows roar, I must go and leave my

49

Nan - cy dear, she's the girl that I a - dore. I must go and leave my

Nan - cy dear, she's the girl that I a - dore. I must go and leave my

Nan - cy dear, she's the girl that I a - dore. I must go and leave my

53

Nan - cy, I must go and leave my Nan - cy, I must go and leave my

Nan - cy, I must go and leave my Nan - cy, I must go and leave my

Nan - cy, I must go and leave my Nan - cy, I must go and leave my

57

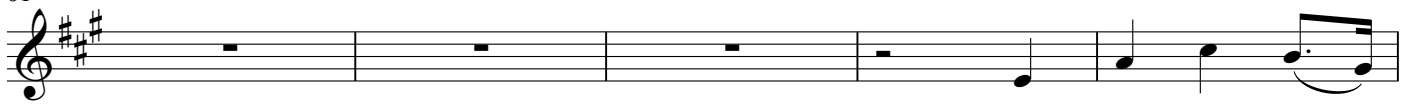
Nan - cy, she's the girl that I a - dore.

Nan - cy, she's the girl that I a - dore.

Nan - cy, she's the girl that I a - dore.

**Sadly  
Unison**

61




3. The ring from her—

66



fin - ger she in - stant - ly drew, Say - ing take this dear - est Wil - liam and my

71



heart shall go too, While these words were spo - ken tears a -

75



- from her eyes— fell, Say - ing may I go a - long with you, Oh—

79




no me love, fare - well. Say - ing may I go a - long with you, Say - ing

83



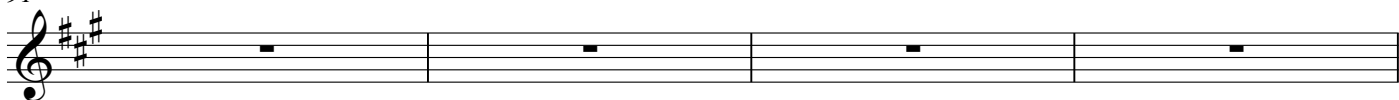
may I go a - long with you, Say - ing may I go a - long with you, Oh—

87



no me love, fare - well.

91



**Joyfully again!**  
**In 3 parts**

95

4. Oh Nan - cy, dear - est Nan - cy, no long - er can I stay, Our—

4. Oh Nan - cy, dear - est Nan - cy, no long - er can I stay, Our

4. Oh Nan - cy, dear - est Nan - cy, no long - er can I stay, Our

100

top - sail is hoist - ed and our an - chor's a - weigh, And the ship she lies

top - sail is hoist - ed and our an - chor's a - weigh, And the ship she lies

top - sail is hoist - ed and our an - chor's a - weigh, And the ship she lies

105

wait - ing for the next flow - ing tide, And if ev - er I re - turn a - gain I'll—

wait - ing for the next flow - ing tide, And if ev - er I re - turn a - gain I'll

wait - ing for the next flow - ing tide, And if ev - er I re - turn a - gain I'll

110

make you my bride. *And if ev - er I re - turn a - gain, And if ev - er I re -*

make you my bride. *And if ev - er I re - turn a - gain, And if ev - er I re -*

make you my bride. *And if ev - er I re - turn a - gain, And if ev - er I re -*

115

- turn a - gain, *And if ev - er I re - turn a - gain I'll make you my bride. And if*

- turn a - gain, *And if ev - er I re - turn a - gain I'll make you my bride. And if*

- turn a - gain, *And if ev - er I re - turn a - gain I'll make you my bride. And if*

120

ev - er I re - turn a - gain, *And if ev - er I re - turn a - gain, And if*

ev - er I re - turn a - gain, *And if ev - er I re - turn a - gain, And if*

ev - er I re - turn a - gain, *And if ev - er I re - turn a - gain, And if*

124

ev - er I re - turn a - gain I'll make you my bride.

ev - er I re - turn a - gain I'll make you my bride.

ev - er I re - turn a - gain I'll make you my bride.

Detailed description: This block contains three staves of music for different voices. Each staff is in the key of A major (three sharps) and 3/4 time. The first staff has a treble clef and contains a vocal line with lyrics. The second and third staves also have treble clefs and contain similar vocal lines with lyrics. The lyrics are: "ev - er I re - turn a - gain I'll make you my bride." The music consists of quarter and eighth notes, with some phrases connected by slurs.

129

Detailed description: This block shows a single musical staff for measure 129. It is in the key of A major (three sharps) and 3/4 time. The staff contains five measures, each with a whole rest, indicating that the voice is silent during this measure.

134

Detailed description: This block shows a single musical staff for measure 134. It is in the key of A major (three sharps) and 3/4 time. The staff contains five measures, each with a whole rest, indicating that the voice is silent during this measure. The staff ends with a double bar line.